

BABY DEVORO™ ROUND FRONT 10" ROUGH

2282.010

- Round front flush valve toilet
- Vitreous china
- Low-consumption (6.0 Lpf/1.6 gpf)
- Fully glazed 2" ballpass trapway
- 10" x 12" water surface area
- 10" high bowl
- 10" roughing-in
- Siphon flush action
- 2 bolt caps
- 1-1/2" top spud
- 100% factory flush tested

Component parts:

- 047007-0070A** Inlet spud (furnished with bowl)
- 481310-100** Bolt caps with retainers (furnished with bowl)

Nominal Dimensions:

603 x 318 x 254mm
 (23-3/4" x 12-1/2" x 10")

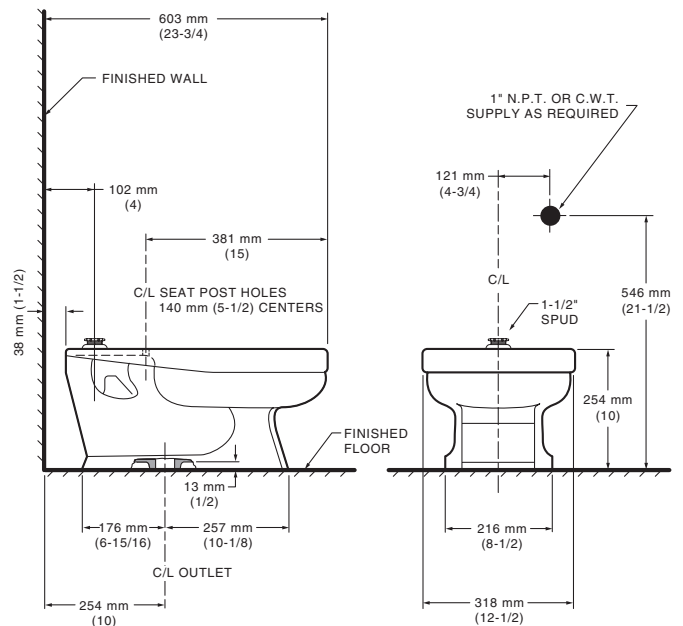
Recommended working pressure – between 25 psi at valve when flushing and 80 psi static

Fixture only, less seat, bolt caps, and flush valve

Compliance Certifications -

Meets or Exceeds the Following Specifications:

- ASME A112.19.2 for Vitreous China Fixtures



To Be Specified:

- Color: White Bone
- Seat: Olsonite #126-CC open front seat less cover
- Seat: Church #1580C open front seat less cover
- Alternate Seat:
- Flush Valve
 - American Standard Selectronic™ #6065.161.002 DC Power (Top Spud)

NOTES:

TO COMPLY WITH AREA CODE GOVERNING THE HEIGHT OF VACUUM BREAKER ON FLUSH VALVE, THE PLUMBER MUST VERIFY DIMENSIONS SHOWN FOR SUPPLY ROUGHING. FLUSH VALVE NOT INCLUDED AND MUST BE ORDERED SEPARATELY. THIS TOILET IS DESIGNED TO ROUGH-IN AT A MINIMUM DIMENSION OF 254MM (10") FROM FINISHED WALL TO C/L OF OUTLET.

IMPORTANT: Dimensions of fixtures are nominal and may vary within the range of tolerances established by ANSI Standard A112.19.2. These measurements are subject to change or cancellation. No responsibility is assumed for use of superseded or voided pages.